

hk 90 L4

| | | | | | | | |
|-----|-------|-------|------|-------|-------|-------|-------|
| Kg. | 19430 | 12000 | 8800 | 6750 | 5330 | 4240 | 3400 |
| mt. | 4.31 | 6.67 | 8.77 | 10.97 | 13.27 | 15.79 | 18.41 |

hk 90 L4+S3

| | | | | | | |
|-----|-------|-------|-------|-------|-------|-------|
| Kg. | 3270 | 2640 | 2170 | 1770 | 1400 | 1080 |
| mt. | 16.19 | 18.25 | 20.15 | 22.15 | 24.35 | 26.65 |

hk 90 L4+S4

| | | | | | | | |
|-----|-------|-------|-------|-------|-------|-------|-------|
| Kg. | 3180 | 2540 | 2080 | 1680 | 1330 | 1000 | 730 |
| mt. | 16.19 | 18.33 | 20.23 | 22.23 | 24.33 | 26.63 | 29.03 |

hk 90 L4+L3

| | | | | | | |
|-----|-------|-------|-------|-------|-------|-------|
| Kg. | 3050 | 2400 | 1930 | 1520 | 1150 | 840 |
| mt. | 16.60 | 18.86 | 20.96 | 23.16 | 25.56 | 28.06 |

hk 90 L4+L4

| | | | | | | | |
|-----|-------|-------|-------|-------|-------|-------|-------|
| Kg. | 2970 | 2300 | 1830 | 1420 | 1070 | 760 | 510 |
| mt. | 16.60 | 18.94 | 21.04 | 23.24 | 25.54 | 28.04 | 30.44 |

hk 90 L5

| | | | | | | | | |
|-----|-------|-------|------|-------|-------|-------|-------|-------|
| Kg. | 19270 | 11720 | 8560 | 6530 | 5130 | 4100 | 3290 | 2660 |
| mt. | 4.31 | 6.75 | 8.85 | 11.05 | 13.35 | 15.75 | 18.37 | 21.09 |

hk 90 L5+S3

| | | | | | | |
|-----|-------|-------|-------|-------|-------|-------|
| Kg. | 2370 | 1890 | 1530 | 1210 | 900 | 640 |
| mt. | 18.67 | 20.73 | 22.63 | 24.63 | 26.83 | 29.13 |

hk 90 L5+S4

| | | | | | | | |
|-----|-------|-------|-------|-------|-------|-------|-------|
| Kg. | 2290 | 1790 | 1430 | 1110 | 830 | 560 | 330 |
| mt. | 18.67 | 20.81 | 22.71 | 24.71 | 26.81 | 29.11 | 31.51 |

hk 90 L5+L3

| | | | | | | |
|-----|-------|-------|-------|-------|-------|-------|
| Kg. | 2190 | 1690 | 1310 | 980 | 680 | 420 |
| mt. | 19.08 | 21.34 | 23.44 | 25.64 | 28.04 | 30.54 |

hk 90 L5+L4

| | | | | | | | |
|-----|-------|-------|-------|-------|-------|-------|-------|
| Kg. | 2100 | 1590 | 1210 | 900 | 600 | 350 | 150 |
| mt. | 19.08 | 21.42 | 23.52 | 25.72 | 28.02 | 30.52 | 32.92 |

hk 90 L6

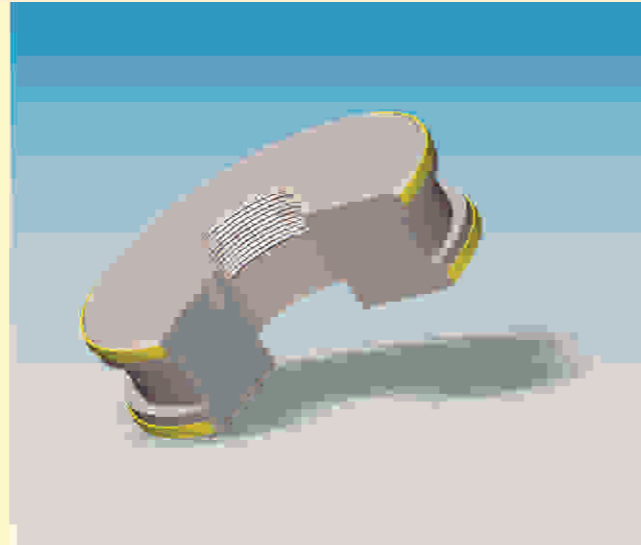
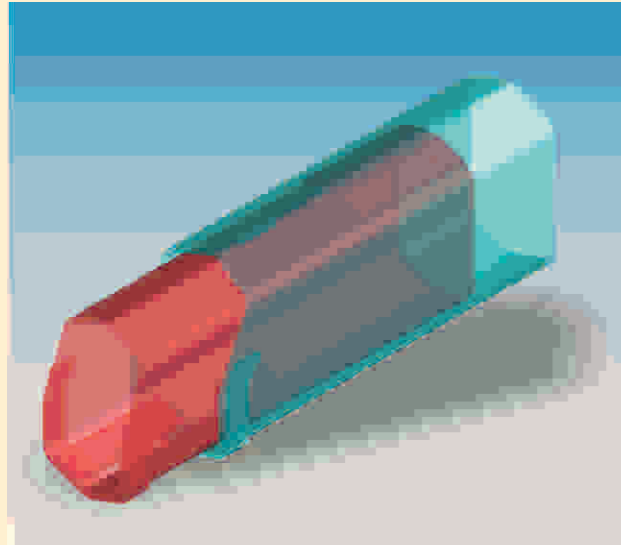
| | | | | | | | | | |
|-----|-------|-------|------|-------|-------|-------|-------|-------|-------|
| Kg. | 19130 | 11430 | 8330 | 6330 | 4950 | 3930 | 3150 | 2520 | 2020 |
| mt. | 4.31 | 6.83 | 8.93 | 11.13 | 13.43 | 15.83 | 18.33 | 21.05 | 23.87 |

hk 90 L6+S3

| | | | | | | |
|-----|-------|-------|-------|-------|-------|-------|
| Kg. | 1640 | 1270 | 980 | 710 | 470 | 240 |
| mt. | 21.26 | 23.32 | 25.22 | 27.22 | 29.42 | 31.72 |

Katalogdaki fotoğraflar HİDROKON LTD.ŞTİ. nin izni olmadan kopyalanamaz.
The photographs in catalogue can't be copied without the permission of HİDROKON LTD. ŞTİ.

| | hk 90 L4 | hk 90 L5 | hk 90 L6 | |
|--|----------|-------------|-------------|-------------|
| Max. Kaldırma Momenti - Max. Lifting Moment | (Tm) | 90 | 90 | 90 |
| Max. Kaldırma Kapasitesi (3m. radüste) - Max. Lifting Capacity (at 3m. radius) | (Ton) | 30 | 30 | 30 |
| Hidrolik Bom Sayısı - Number of Hydraulic Boom | (Adet) | 4 | 5 | 6 |
| Max. Hidrolik Uzanma Mesafesi - Max. Hydraulic Reach | (m) | 13.27 | 15.75 | 18.33 |
| Max. Mekanik Uzanma Mesafesi - Max. Manuel Reach | (m) | 18.41 | 21.09 | 23.87 |
| Max. Dönüş Açısı - Max. Slewing Angle | (°) | Sür.(Cont.) | Sür.(Cont.) | Sür.(Cont.) |
| Vinç Şasi Yüksekliği - Crane Chassis Height | (mm) | 250 | 250 | 250 |
| Max. Çalışma Basıncı - Max. Working Pressure | (Bar) | 250 | 250 | 250 |
| Yağ Tankı Kapasitesi - Oil Tank Capacity | (lt) | 400 | 420 | 445 |
| Max. Çalışma Açısı - Max. Working Angle | (°) | 85 | 85 | 85 |
| A | (mm) | 4668 | 4748 | 4848 |



STANDART



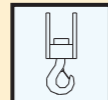
Dönüş Açısı
Slewing Angle



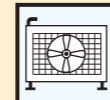
Koltuk
Seat



Hidrolik Yağ Tankı
Oil Tank

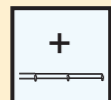


Kanca
Hook



Yağ Soğutucusu
Oil Cooler

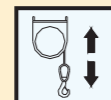
OPSİYONEL



İlave Mekanik Bom
Mechanic Extensions



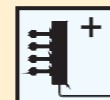
İnsan Sepeti
Basket



Halat Tamburu
Winch



Uzaktan Kumanda
Remote Control



İlave Kumanda Dilimi
Additional Function

STANDARD

OPTIONAL

Teknik bilgiler yol gösterici olup, bağlayıcı değildir. Ölçüleri, özellikleri değiştirme ve geliştirme hakkımız saklıdır.
Technical specialty is guider but not connective. Our changing right about size and feature is secret.